



Improving Educational Outcomes for Alaska Students



Dr. Lisa S. Parady

Executive Director,
Alaska Council of School Administrators

Senate Education Committee
February 1, 2021



Leading Together for Alaska's Students

Alaska Council of School Administrators



*Leadership, Unity, and
Advocacy for Public Education*



Alaska Superintendents Association



Alaska Association of Secondary School Principals



Alaska Association of Elementary School Principals



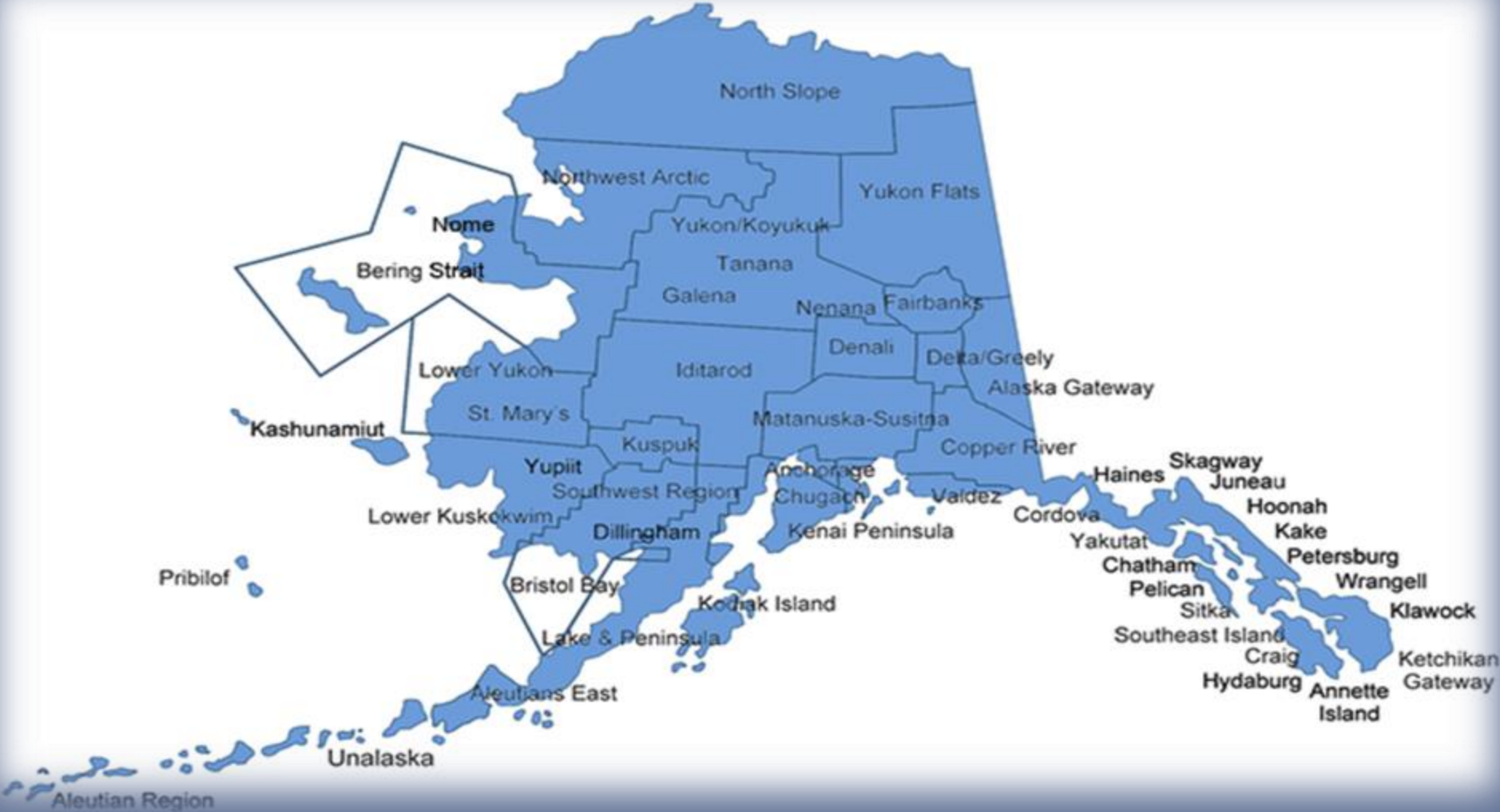
Alaska Association of School Business Officials

& more education leaders



Leading Together for Alaska's Students

One State: 54 School Districts



Alaska Schools - *by the numbers*

132,576

students

21.7% correspondence



455

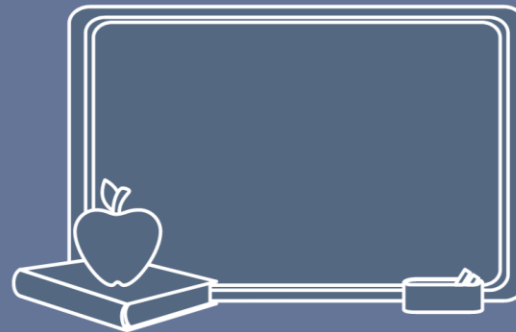
school facilities

44% are >40 years old

54

school districts

In business terms, largest employer in most communities



7,592

teachers

Chronic educator turnover each year





Joint Position Statements: Unified Priorities for Supporting Alaska Students

Developed collaboratively by:

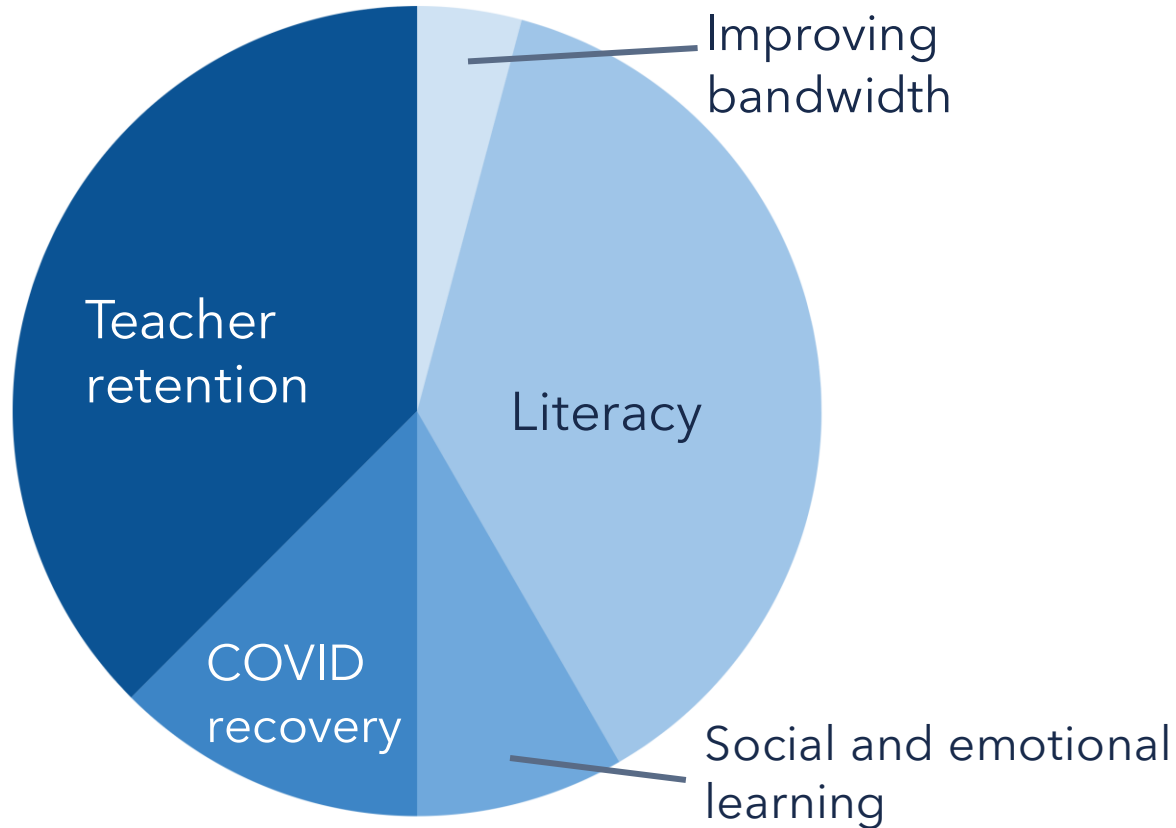
- Superintendents
- K-12 Principals
- School Business Officials
- ACSA



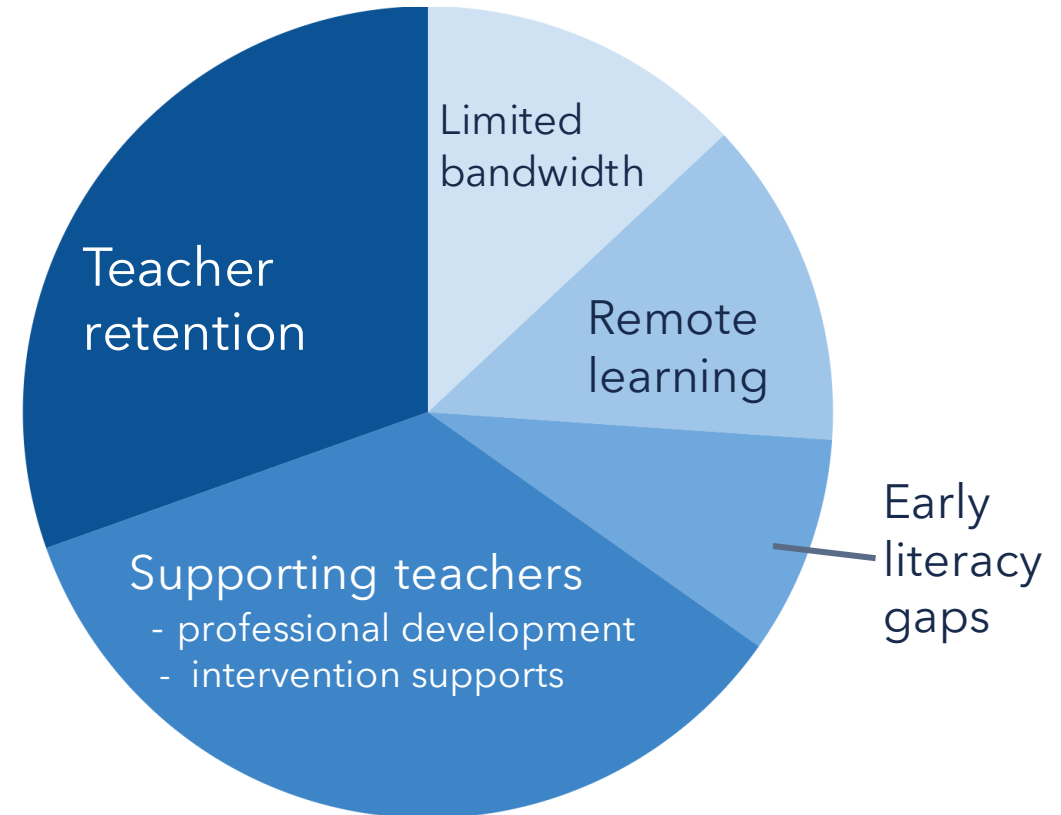
Superintendent Survey:

Priorities and barriers for student achievement

Priorities for Student Achievement



Barriers to Student Achievement



"Students have to **Maslow** before they can **Bloom**"

- Dwayne Reed

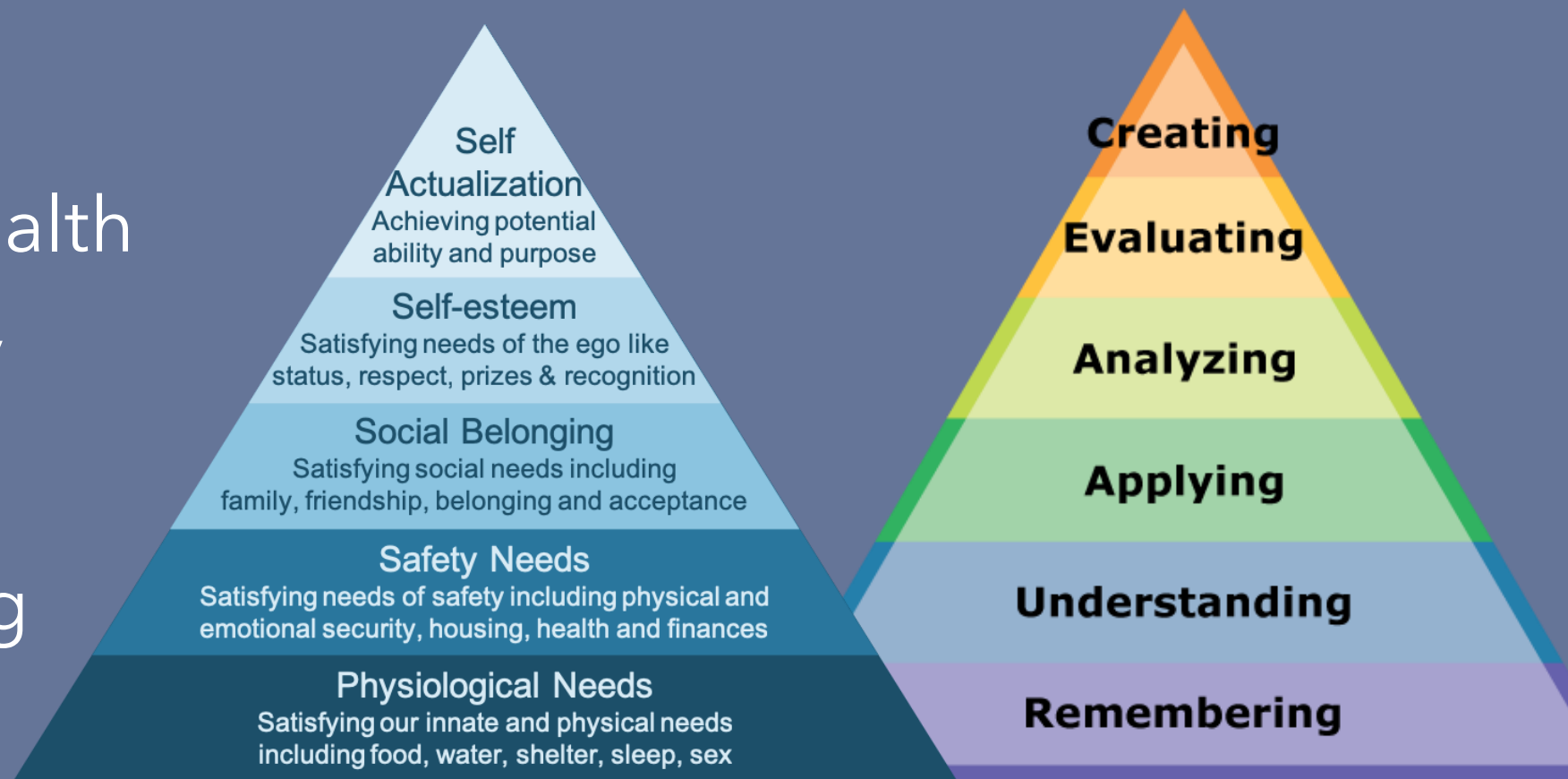
Basic needs

 Emotional Health

 School Safety

 Nutrition

 Early Learning



Social, Emotional, and Mental Health

JPS p. 2

Alaska has extremely high rates of childhood trauma, including the highest in nation in sexual assault, repeat child maltreatment, and suicide

Adverse Childhood Experiences (ACEs) have lifelong impacts on learning and health

COVID impact

Mental health impacts of isolation
Loss of access to school support systems



Early Childhood Education

Nearly 70% of Alaska students enter kindergarten without foundational preparation for learning, including early literacy

Research shows that early intervention and instruction is essential to healthy brain development and lifelong success

Quality early education is a long-term investment - reduces need for high-cost intensive intervention later



Career & Technical Education

JPS p. 3

CTE programs provide students with the foundation for high-paying, skilled jobs

Robust CTE programs are a critical component of schools with high academic performance and high graduation rates

Gives students the opportunity to build future-ready skills in and for Alaska

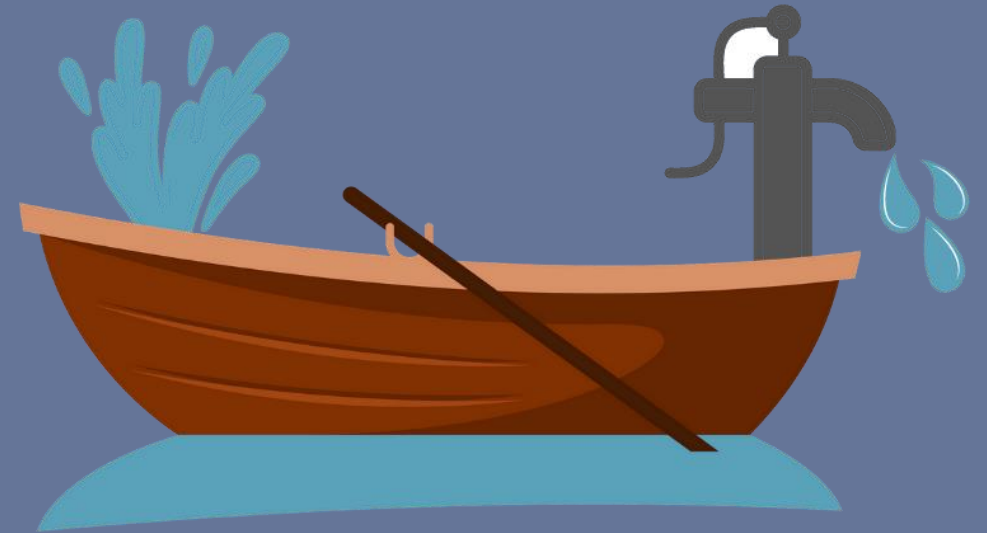


School Safety

Student learning requires a safe school environment

- Average building age: 39 years
- 59 buildings are over 60 years old

Estimated current backlog:
\$206 million and growing



Increasing Bandwidth

Almost 60,000 Alaska students lack the bandwidth necessary for digital learning

- Limited rural infrastructure
- High costs statewide
- Federal funds restricted for school facilities

All Alaska students **need** and **deserve** digital equity

COVID impact

No access to live instruction without adequate bandwidth
Unprecedented bandwidth demands



Educator Retention

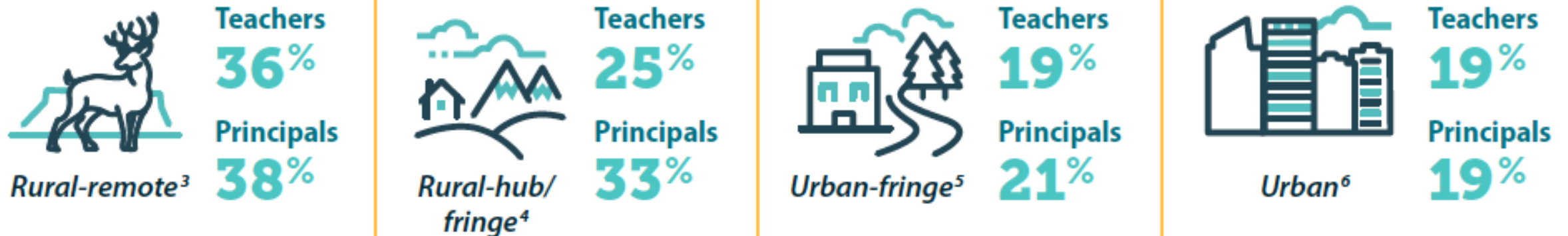
Teacher quality is the single most important school-based factor in student performance

Retaining effective educators and leaders is essential to closing achievement gaps and increasing student performance

Rural schools and students are hardest hit by turnover

Rural schools have much higher teacher and principal turnover than urban or urban-fringe schools, with 64 percent of rural-remote teachers who turn over leaving the state or the profession.

Average annual turnover rates for 2012/13 to 2017/18



Educator Retention

Superintendent turnover drives principal turnover drives teacher turnover drives low student performance

- ASA aspiring superintendents
- District office cohort
- New and incoming superintendents
- Alaska School Leadership Academy
- Alaska Staff Development Network



Timely, Reliable Funding

***Predictable
funding***

***Sound
financial
management***

***Improved
teacher
retention***

***Greater
student
achievement***

Stable, predictable funding improves district efficiency and keeps the focus on student achievement



Alaska's Educational Leaders are United:

Efficiency in Unity

- Superintendents (**ASA**)
- Principals (**AASSP, AAESP**)
- Alaska Association of School Business Officials (**ALASBO**)

Educational leaders including

- Alaska Association of School Boards (**AASB**)
- Department of Health and Social Services (**DHSS**)
- Department of Education and Early Development (**DEED**)
- Alaska Municipal League (**AML**)
- University of Alaska, College of Education (**UA COE**)
- Alaska School Activities Association (**ASAA**)
- National Education Association-Alaska (**NEA-A**)
- Coalition for Education Equity (**CEE**)
- Alaska Educational Resource Center (**SERRC**)
- And other state and local educational organizations



We look forward to supporting you!

Your resource for public education.

Dr. Lisa S. Parady,
ACSA Executive Director
lparady@alaskaacsa.org

(907) 903-1689 (cell)
(907) 586-9702
@Lparady1 @ACSAASDN

